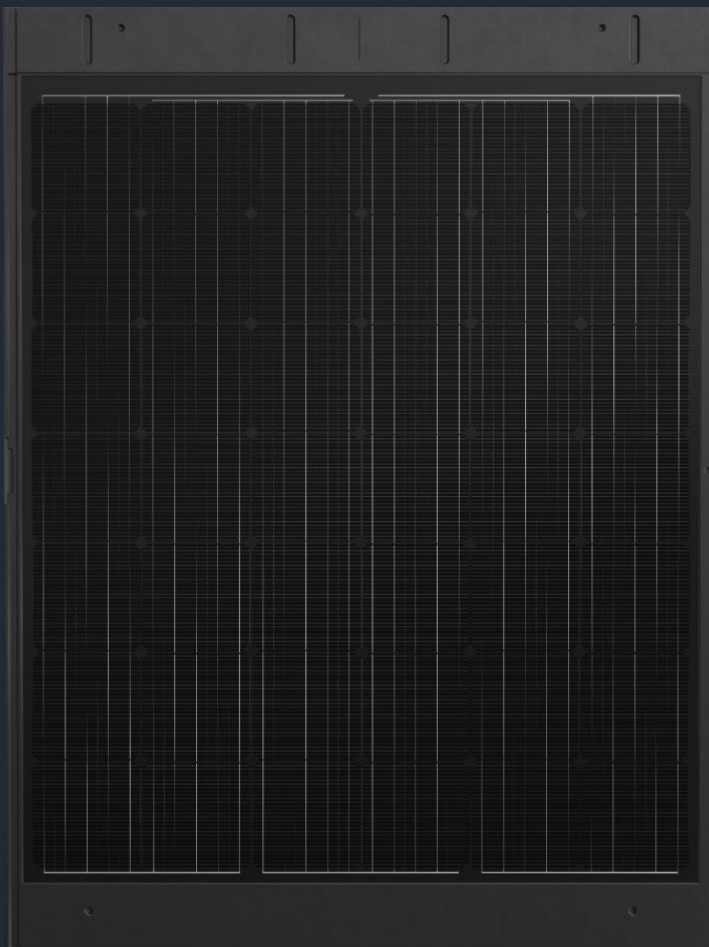


Solar Capture

Solar Tile Data Sheet

Composite Solar Roof Tile



Designed and
manufactured in the UK



Optimal efficiency
guaranteed



Highly sustainable

Made using renewable energy and with
recyclable materials



Extremely durable and
reliable



High aesthetic value



Significant weight savings

Under half the weight of standard solar
PV



Residential



Commercial



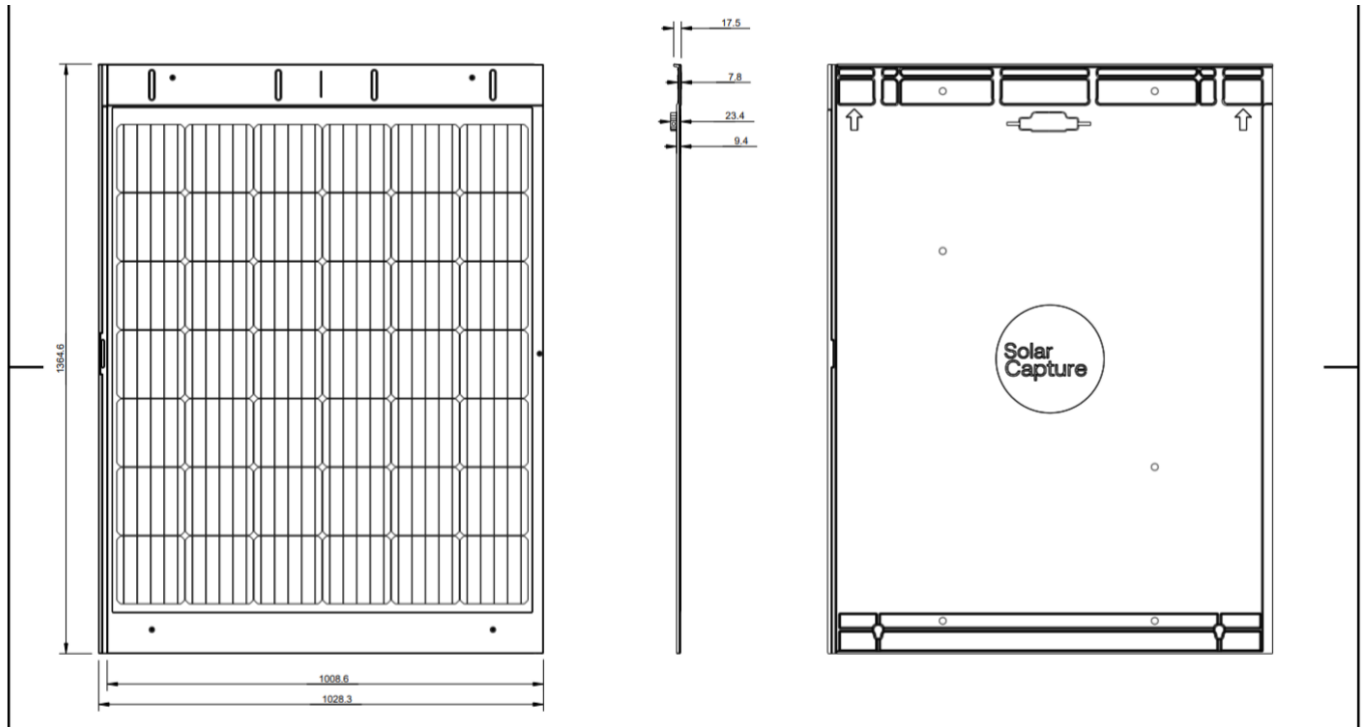
Facade

Solar Solutions for *People and Planet*

solarcapturetechnologies.com
phone: +44(0)1670 704508
email: enquiries@solarcapturetechnologies.com

PV Technology Centre
Albert Street, Blyth
Northumberland, NE24 1LZ

Technical Drawings



Mechanical Data

Length (mm)	1365
Width (mm)	1028
Thickness (mm)	17.5
Weight (kg)	12
Cell type	Mono Perc
Junction box	In accordance with IEC 62790

Solar Solutions for *People and Planet*

solarcapturetechnologies.com
phone: +44(0)1670 704508
email: enquiries@solarcapturetechnologies.com

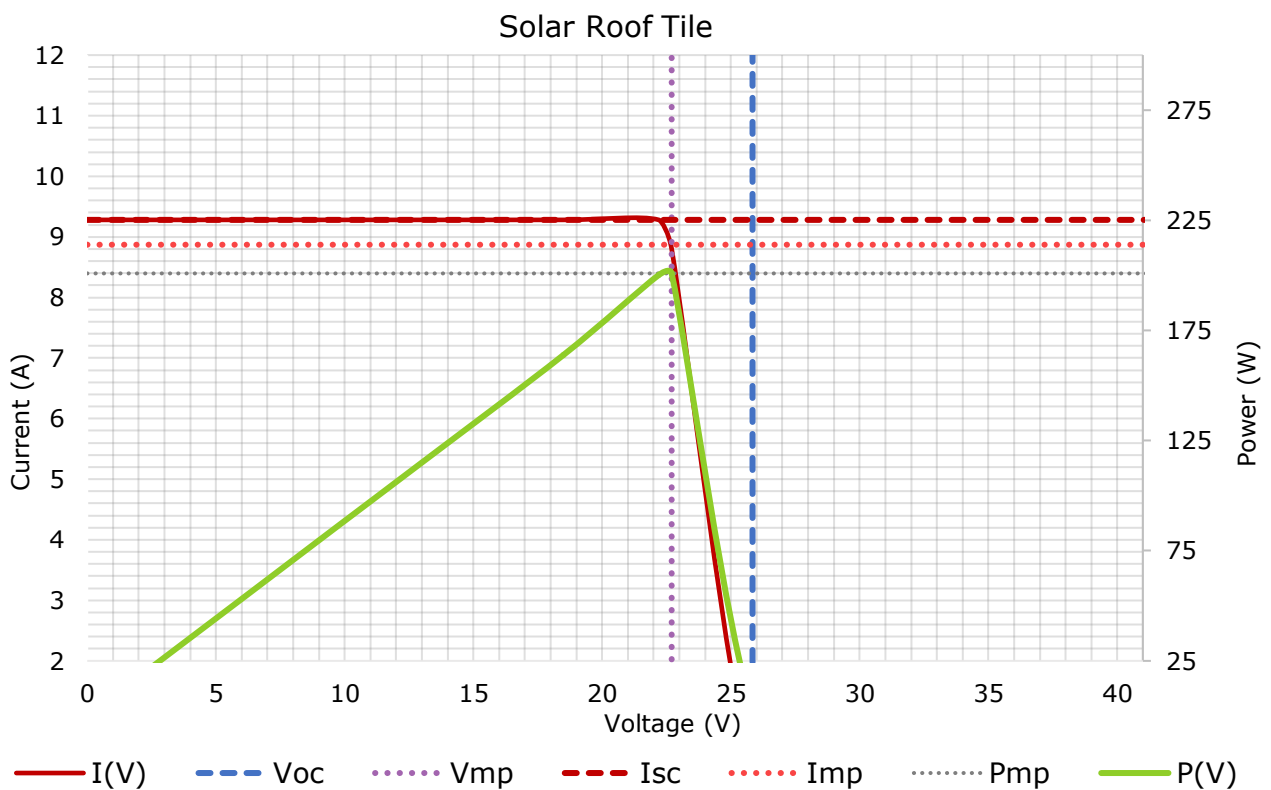
PV Technology Centre
Albert Street, Blyth
Northumberland, NE24 1LZ

SolarCapture

Electrical Data

Number of Cells	42
Maximum Power (W)	200
Maximum Power Voltage (Vmp) (V)	23
Maximum Power Current (Imp) (A)	8.87
Open Circuit Voltage (Voc) (V)	26
Short Circuit Current (Isc) (A)	8.81
Cell Efficiency (%)	22.5

IV-Curve



Solar Solutions for *People and Planet*

solarcapturetechnologies.com
 phone: +44(0)1670 704508
 email: enquiries@solarcapturetechnologies.com

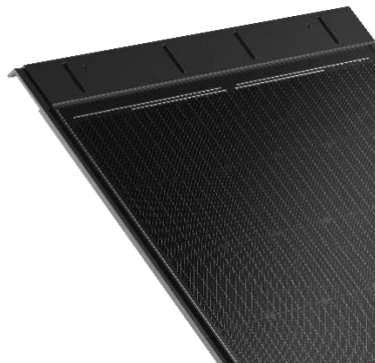
PV Technology Centre
 Albert Street, Blyth
 Northumberland, NE24 1LZ

SolarCapture

Temperature Co-efficients

Current Temperature Co-efficient (I_{sc})	0.04%/°C
Voltage Temperature Co-efficient (V_{oc})	-0.31%/°C
Power Temperature Co-efficient (P_{max})	-0.41%/°C

Product Images



Certification

IEC 61212-1:2016, IEC 61215-2:2016, IEC 612151-1:2016, IEC 61730-1:2016 and IEC 61730-2-:2016

Solar Solutions for *People and Planet*

solarcapturetechnologies.com
phone: +44(0)1670 704508
email: enquiries@solarcapturetechnologies.com

PV Technology Centre
Albert Street, Blyth
Northumberland, NE24 1LZ

SolarCapture